



Limpley Stoke

news

March 2023

Issue No 57

Coronation countdown

The Coronation of His Majesty The King and Her Majesty The Queen Consort will take place at Westminster Abbey on **Saturday, May 6**. Communities are encouraged to get together to celebrate and mark the occasion with local events.



A **Coronation Concert** will be held at Windsor Castle on **Sunday, May 7**, while neighbours and communities are being encouraged to share food and fun together with the **Coronation Big Lunch** on the same date. An additional bank holiday on **Monday, May 8** has been dubbed **The Big Help Out**, with members of the public encouraged to volunteer within the local community.

Limpley Stoke Parish Council has decided not to organise or sponsor any events. Instead, residents are encouraged to arrange their own picnics in the King George V play park on the day. More details nearer the time.

With the Coronation just over two months away, Wiltshire Council has collated useful information and guidance to encourage people to get involved in this historic occasion and to help with their arrangements.

<https://www.coronation.gov.uk>

New role(s) for MP

Michelle Donelan has been appointed Secretary of State for Science, Innovation and Technology – a new government department – following the recent cabinet reshuffle.

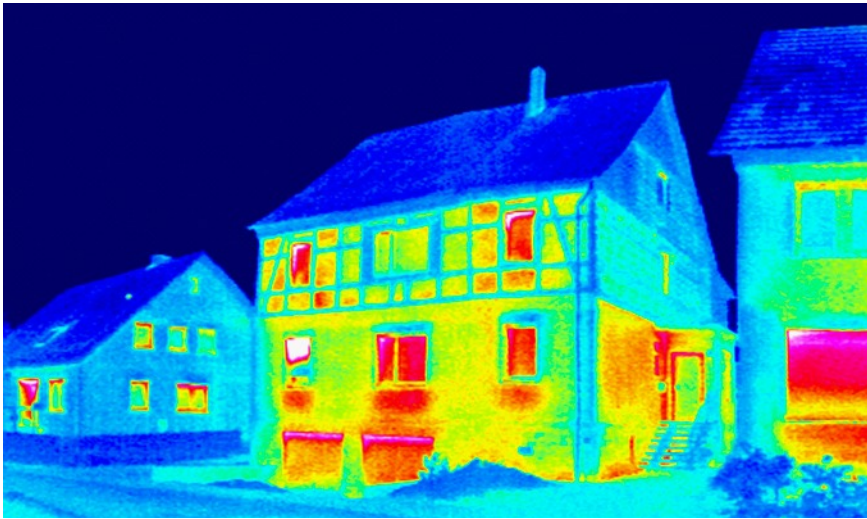
The Chippenham MP previously held the role of Secretary of State for Digital, Culture, Media and Sport from September 2022 to February 2023.

Meanwhile, further congratulations are in order as Ms Donelan recently announced she will be taking maternity leave in April, when her first child is due. The number of constituency visits will be reduced during this time but she will still be on hand throughout to help local residents, supported by her team.

Limpley Stoke Parish Meeting

Limpley Stoke Parish Council's **Annual Parish Meeting** will be on **Tuesday, April 18** from 7–9pm in **Limpley Stoke Village Hall**.

A social event for residents and an opportunity to hear about village projects. Guest speakers from Nature Chain, Hop Pole, Galleries shop, and energy groups. *More details next month.*



Home energy shot to the top of the agenda last year and looks set to stay there in 2023, so now is the ideal time to make our homes cheaper, warmer, more sustainable and energy-efficient.

The aim of Freshford and Limpley Stoke Home Energy Group (FLHEG) is to help people through the often-confusing process of upgrading their homes to reduce carbon emissions. In the group's busy first year, 28 home energy surveys were conducted using thermal imaging and free advice offered on projects to help boost energy efficiency and lower costs.

To book a free energy survey, add your name to the mailing list or join the group, email flhegroup@gmail.com. Visit the web page for a list of suppliers used and recommended by local people at <https://www.freshford.org.uk/freshford-limpley-stoke-home-energy-group/>.

The next talk is at 7pm on **Monday, March 20** at Freshford Memorial Hall, when Jenna Wilcox from **CSE Futureproof** will give a presentation on retrofit, the process of making older homes more energy-efficient (<https://www.cse.org.uk/>).



Beaver activity spotted on local river, trees and branches gnawed, but no sign yet of the creatures themselves.



You can make a difference

The BBC Radio Wiltshire *Make a Difference* awards are a way of thanking those local folk going above and beyond the call of duty. Read about the various categories and nominate someone you know at <https://www.bbc.co.uk/makeadifference>. Nominations close on **Sunday, March 5** at 11.00pm. Winners will be announced at an awards ceremony in September.

Galleries cafe's grand opening

The grand opening of the sparkling new Galleries extension will take place on **Friday, March 31** at 2.30pm [rescheduled from January].

We'd never have got here without our dedicated team of skilled volunteer 'heavies' under Wags Firmin and our generous donors, who include the Medlock Trust, Hills Landfill, the Bernard Sunley Charitable Foundation, the National Lottery Community Fund, Freshford and Limpley Stoke Parish Councils, Friends of Freshford, and a number of generous local families and family trusts.

Please come along and help us open our new community facility in style.

FLiSCA trustee vacancy

Did you know that the profits from the Galleries, our community shop and café, all go to FLiSCA (Freshford & Limpley Stoke Community Association), a community charity? As a result, FLiSCA has been able to pay out over £70,000 in grants to local community groups and associations in the last 12 years.

We currently have a **vacancy for a secretary** on the board of FLiSCA so, if you'd like to use your skills to make a real difference to your local community, contact me at simonhjcoombe@hotmail.com.

Simon Coombe



MICHELLE DONELAN, MP hosted a **Community Crime Forum** in February for people to have their say on issues specifically relating to Bradford on Avon and surrounding villages.

Ms Donelan reports: “My fourth and final virtual community crime forum, which I organised this month [Feb], was a useful opportunity for you to raise concerns and ask questions about crime in Bradford on Avon and the villages nearby.

“We covered a number of topics, including concerns about sexual assaults in the area, rural burglaries and speeding in some of the villages, issues our local officers are very much across.

“The Police and Crime Commissioner [PCC] for Wiltshire, Philip Wilkinson, and local inspector Andy Lemon were also able to update us on crime figures for the area. We have seen a reduction in most crimes overall, which is encouraging news.

“Some of the actions and initiatives your local officers will be using going forward mentioned across my four crime forums include:

- Attending every burglary in the area, in line with our new national Government policy
- Increased patrols with dogs and night vision cameras to clamp down on drug use
- Deploying community speed watch and enforcement officers in the areas directly where you are reporting speeding to myself and the PCC
- More engagement with schools and the community more widely to reduce anti-social behaviour
- Deploying mobile police stations so rural areas and villages can have a point of contact and a recognisable face for raising concerns

- Improvements with IT systems and efficiency, so that our local officers can spend more time on the beat
- Greater flexibility with recruitment, and reforming how officers are organised to target resources where they are needed

“Thanks to all of those who have attended the sessions over the last few months covering the whole constituency, and thank you to the PCC and our local officers for their time too.”

Michelle Donelan
FOR BRADFORD ON AVON, CHEFFENHAM, COBSHAM, HILPERTON & VILLAGES



Claverton's 210-year-old waterwheel under threat

To anyone who regularly walks our local stretch of the Kennet and Avon Canal towpath, Claverton pumping station will be a familiar sight. But cracks have been found in the cast iron waterwheel's frame, making it unsafe to run the machinery until repairs have been carried out.

Designed by engineer John Rennie, Claverton Pumping Station was 'adopted' a few years ago by its group of 20 volunteers and, while the Canal & River Trust owns the Grade II listed building, it's the volunteers who run and manage it.

The volunteers formed a charity last year that supports the restoration and continued maintenance of the station but doesn't have the resources needed to fund the inspection and repairs necessary to return it to full working order.

Without action, Claverton could lose this unique part of its industrial heritage. An appeal has been launched to raise the £10,000 needed to save this local landmark for future generations.

If you'd care to donate, visit <https://www.justgiving.com/campaign/claverton-casting-repairs>

Claverton is one of only two working examples of original Rennie pumping stations in the country, the other one being at Crofton near Great Bedwyn in Wiltshire.



World Heritage Day: March 4

Bath will celebrate World Heritage Day 2023 on **Saturday, March 4** with a free event at the Guildhall from 11am–3pm for residents and visitors to the city.

Discover 2,000 years of Bath's spa history and find out why Bath is one of the greatest spa towns in Europe. There promises to be something for all the family, including guided walks, short talks, craft activities and displays presented by museums and heritage organisations.

No booking required. For more information, visit <https://www.bathworldheritage.org.uk>.

Hop Pole EGM

Shareholders and residents alike are cordially invited to a **Hop Pole Extraordinary General Meeting** at 7pm on **Wednesday, March 29** at **Freshford Village Hall**. The management team will give an update on the work schedule, refurbishment costs and fund-raising requirements to get our community pub up and running. All welcome.



Organisers of a local transport scheme have issued a timely reminder of the service. **Limpley Stoke and Freshford Link** was set up in 1989 in Limpley Stoke, later extended to include Freshford, to enable people to make journeys when public transport is unavailable or unsuitable, such as for important appointments and shopping, but also for social or personal needs.

This voluntary organisation is operated by drivers who use their own cars and receive fuel expenses. The cost of insurance and mobile phones is covered by donations from passengers, which are welcome though not obligatory.

To use Link, phone **07714 169 216**. Please give two days' notice of your intended journey. Leave a message and phone number if you receive a recorded reply.

NEW DRIVERS. Link provides an invaluable service and is always looking to recruit more drivers. There is no obligation to make yourself available and you're unlikely to be called on more than twice a month but, if you can find time to volunteer, phone the Link number above.

What's on in March

Freshford & District Horticultural Society AGM and mini show

Wednesday, March 1

Freshford Memorial Hall, 7.00 for 7.30pm

After the AGM, enjoy a glass of wine and nibbles and take part in a pictorial quiz, with a prize for the most correct answers.

Bring along your garden treasures for judging at the mini show. Classes include a bowl of bulbs, spring flower arrangement, and photograph depicting 'new beginnings'. Everyone welcome, no need to be a member. Contact Helen Walker on 01225 723842 or 07591 587 682 for more details.

'Top Pole' pop-up pub

**Friday, March 17, 6.30–10pm
Limpley Stoke Village Hall**

Pop-up pub held monthly at the Village Hall in Middle Stoke.

Drinks, snacks, music, and board games including CORT, described as an easy to play but difficult to win strategic new game.

Bring cash or card. Profits go towards maintenance of the village hall.

Register your team for Quiz Night

**Friday, March 10, 7pm for 7.30pm start
Freshford Memorial Hall**

Friends of Freshford Quiz Night is fast approaching, so get your named teams (4 to 6 people) together and register by **MONDAY, MARCH 6** (*see below*).

Eight rounds of questions on general knowledge, sport, music, natural world, geography, and picture round. Winners awarded Friends of Freshford trophy. Raffle with some great local prizes.

Tickets £10 per person, paid in cash on the night.

Register by emailing friendsoffreshford@gmail.com; at <https://www.friendsoffreshford.org/get-involved>; or phone Richard Blamey on 01225 720 048.

Bring your own food, drinks, plates, cutlery and glasses.

Film Night

Thursday, March 23

Limpley Stoke Village Hall

Doors open 6.45pm / film starts 7.15pm



The Conformist

by Bernardo Bertolucci, 1970

Sinister political drama set in the era of Mussolini's fascist Italy, a man is induced into the cause and ordered to assassinate his old professor. *The Conformist* has been cited as a major influence by directors such as Coppola, Scorsese and Spielberg. *The Guardian* described it as one of the most poetic and influential ever made.

Membership info: email limpleycreative@gmail.com.

History Society talk

Joseph Glanvill, rector of Bath Abbey: witch-hunter of the West Country by Tony McAleavy

**Wednesday, March 22, 7.30pm
Freshford Memorial Hall**

Author and historian Tony McAleavy's recent book on 17th century witchcraft has a significant focus on the persecution of so-called witches in Somerset and the role of Joseph Glanvill as witch-finder and propagandist for those who wanted to hang accused women.

Glanvill's books on the authenticity of witchcraft were read with great interest in New England and contributed to the witch craze in Salem in 1692.

Members free Visitors £3 Everyone welcome

BIN COLLECTIONS

**Blue-lidded bin
Black box
Green waste
(chargeable)**



Wednesday, March 8

Wednesday, March 22



**Mobile library
monthly visit:**

**Thurs, March 16
10.00 – 10.25am
Uplands Close,
Midford Lane**

Limpley Stoke News is an independent publication, produced and edited by Sheena Broadhead, who reserves all editorial rights. To submit an article, email sheena.broadhead@tiscali.co.uk