

Limpley Stoke

news

February 2024



Issue No 67

Deluge brings disruption

Limpley Stoke and Freshford experienced their worst flooding for many years last month, when the two villages were almost cut off in the wake of Storm Henk. The B3108 at the bottom of Winsley Hill was closed, with adjacent fields several feet deep in floodwater after the river overflowed.

The meadows near The Inn at **Freshford** were also under water, the area once again resembling a mini Somerset Levels.

Freshford Mill bridge is closed to vehicles for the foreseeable future after railings were destroyed in the deluge, leaving behind a trail of debris.



Top: Winsley Hill. Left: opposite the Inn at Freshford. Above: Freshford Mill bridge (© Freshford PC)

Bradford on Avon is said to have suffered its worst flooding in a decade, with water levels in the area of the town bridge reported to be thigh-high in places following torrential downpours.

Claverton's Grade 1-listed pumping station, which dates from 1813, suffered the third-highest flood in its history, with water reaching first-floor level. The pumping station is run by volunteers and more help is always needed. To find out more, visit <https://www.claverton.org>.



More than 160 people have already supported the Hop Pole second share issue and, with just a few days to go at the time of writing, the minimum £150,000 required to save the pub's future has very nearly been reached. Thanks to a US investor agreeing to buy up to £3,000 of shares on a match-funding basis, the next £3,000 of share applications will be doubled, meaning there will be enough investment to carry the project forward. To take advantage of this offer, visit <https://www.limpleystokecbs.org/get-inn-involved>

Simon Coombe commented: "With just a week to go to the deadline, we are really close to our £150k minimum but still a long way away from our £300k target. Having reached £150k, we are confident the pub will reopen, but the greater the shortfall, the greater the dependence on volunteer labour and the scrounging team."

With materials comprising around 50 per cent of costs, free or cheap materials from suppliers are needed if the project is to be completed within a very tight budget. A number of suppliers are already supporting the project, but more volunteers are needed to help scrounge some bargains. To find out more, contact Julian Davies at volunteers@savethehoppole.org

Rosemary Lane

There will be a temporary path closure between Rosemary Lane and the A36 to allow contractors to carry out surfacing works on a muddy section of the public footpath.

The closure starts on **February 19**, with work expected to take one week.

Winsley Hill overnight closures

The B3108 will be closed overnight between **February 26 and March 6** for carriageway resurfacing and associated works. The closure – between the C391 Limpley Stoke Road, Winsley and its junction with Murhill – will be in place from 7pm until 6am on week nights only.

It is expected the D1 bus will need to be diverted via Sally in the Woods while the closures are in place.

The work is being managed by Atkins. Contact them on 01225 758693 or visit <https://one.network/?tm=136212808>

PRECEPT 2024/25

Limpley Stoke Parish Council has voted not to increase its annual precept for 2024/2025, which equates to £75.55 for a Band D property, to reflect the ongoing economic situation.

The precept, which is part of the Council Tax for the year, is a charge on each property within the parish.

The Parish Council will be looking to prioritise improvements and activities, based on where it can make the biggest, positive impact with the money available.

The main areas this year will be:

- Speed reduction programmes in, and on approaches to, the village
- Traffic calming measures throughout the village
- Road parking review
- Environmental projects
- Neighbourhood Plan review

<https://www.limpleystoke.com>

Gas works continue

The second phase of Wales & West Utilities' gas main upgrade work through Limpley Stoke – from the Woods Hill junction to outside No 7 Crowe Hill – is on schedule to begin towards the end of **January** and is expected to take until **March 8** to complete. Four phased closures will take place over a five-month period and work is expected to continue until the end of May 2024. More information is available at <https://one.network/?tm=135383213>. Customer Services: phone 0800 912 2999 / email enquiries@wwutilities.co.uk.

New title for areas of natural beauty

All designated Areas of Outstanding Natural Beauty (AONBs) have been elevated by the Government to be re-named as National Landscapes. This decision will reflect their national significance alongside their larger and more well-known counterparts, National Parks, to enhance and conserve their natural beauty.



Cotswolds National Landscape

Around 44 per cent of Wiltshire is covered by three National Landscapes: the Cotswolds, North Wessex Downs and Cranborne Chase. The Cotswolds – one of the largest protected landscapes in England – stretches from Bath and Wiltshire in the south, through Gloucestershire and Oxfordshire, to Warwickshire and Worcestershire in the north.

The Cotswolds was designated an AONB in 1966 in recognition of its rich, diverse and high-quality landscape. It is the largest of 46 AONBs in the UK, and the second largest protected landscape in England after the Lake District National Park.

Wiltshire wins recycling award

Wiltshire Council has won a national award in recognition of its work to encourage people to recycle as much as possible.

The *Recycling: Let's Sort It* campaign came first in the Best Communications Campaign of the Year at the Local Authority Recycling Advisory Committee Conference awards held late last year. Wiltshire was shortlisted alongside Oxfordshire County Council, Suffolk Waste Partnership and a Torbay Council company.

Wiltshire's campaign, which started last February, aims to increase recycling rates and reduce the amount of contamination, following an increase in items which can't be recycled being put in blue-lidded bins through the kerbside collection scheme.

Data for December 2022 showed that over 18 per cent of incorrect materials were sent to the council's waste facility. By April 2023, the figure for input contamination had reduced to less than 10 per cent.

<https://www.wiltshire.gov.uk/hrc-waste-sorting>

Waste and recycling collections

Waste collection dates relevant to your address can be found at <https://ifforms.wiltshire.gov.uk/WasteCollectionDays/index>; by phoning 0300 456 0102; or by emailing customerservices@wiltshire.gov.uk.



Chase away the cold, dark days of winter by visiting the *ReBalance Bath Festival*. Taking place at venues across the city from now until **February 18**, there's a full programme of over 120 events focused on physical and mental well-being, as well as talks, workshops and taster sessions, many of which are free.

<https://www.welcometobath.co.uk/rebalance-bath-festival-of-wellbeing/>

Date for your diary

Advance notice that this year's Limpley Stoke Annual Parish Meeting is scheduled to take place on **Tuesday, April 16** at Limpley Stoke Village Hall.

Details of speakers and topics will be publicised in due course.

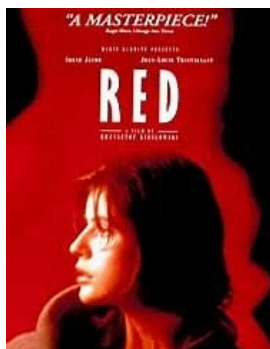
What's on

Film Night

Wednesday, February 7
Limpley Stoke Village Hall
7.00 for 7.30pm

Three Colours Red

is a 1994 French–Swiss romantic mystery by Polish director, Krzysztof Kieslowski.



Set in Geneva, a young model meets a retired judge who spies on his neighbours' phone calls. The film explores themes of fraternity, chance and human relationships.

Licensed bar, friendly atmosphere and parking available near the hall. For Film Club details, email limpleycreative@gmail.com.

Pop-up pub

Friday, Feb 16, 6.30–10pm
Limpley Stoke Village Hall

Food, drinks and music. Cash or card. Profits to Hop Pole campaign.

This month's food choice is a veggie or non-veggie chilli and rice (£8), followed by pear and amaretti cheesecake (£2.50). Email your choice to orlamorrish@gmail.com

Live music from members of local band, *The Limpley Strokes*.

Mobile library monthly visit:

Thursday, Feb 15
10.00 – 10.25am

Uplands Close,
Midford Lane



Horticultural Society talk

Wednesday, February 7
Freshford Memorial Hall, 7.30pm

Net Zero to Garden Hero by Brett Hardy

Discover how to have an environmentally friendly garden, help save the planet and reduce the effects of climate change. Brett Hardy will share his top gardening tips, latest research and



hands-on experience as well as some easy solutions to help people embrace eco-friendly gardening techniques.

Members free Visitors £3.00 Everyone welcome

History Society talk

Wednesday,
February 28, 7.30pm
Freshford
Memorial Hall

Lacock: a most unique village by Dorothy Treasure



The newly-revised Pevsner volume on Wiltshire states that Lacock village is “one of the best in the country ... and with a wealth of medieval buildings ... The extraordinary degree of preservation is thanks to the Talbot family who owned nearly every house until they gave the estate to the National Trust in 1958”.

The village is said to have been started soon after Lacock Abbey was founded in 1229 and to date substantially from the early 14th century. Seven centuries of buildings, none later than about 1926, can be seen in a 10-minute walk around Lacock.

Dorothy Treasure is Principal Buildings Historian at Wiltshire Buildings Record in Chippenham.

Members free Visitors £3.00 Everyone welcome