

# Limpley Stoke

October 2023



Issue No 63

news

## Hop Pole project: it's crunch time

**P**hase 1 of the project to secure the exterior shell of the building (roof, walls and windows) is almost complete and is on-budget, *writes Simon Coombe.*

Along the way, we have uncovered some fascinating facts about this 16th century building (to learn more, please sign up to one of our Hard Hat Tours) and, thanks to the experienced professionals working for us and our army of skilled volunteers, we have an exciting plan to sensitively refurbish the interior to ensure the Hop Pole will once again be a sustainable and vibrant village pub and hub.

To achieve this, we are about to announce a second share issue to raise at least £300k to complete this project. If we fail, we will be forced to abandon the project but, if we succeed, the Hop Pole can remain at the heart of our community for another 500 years.

It's crunch time but we are confident that, with your support, we will be able to reopen the Hop Pole in the summer of 2024.

To learn more, please come along to the **Hop Pole AGM on Wednesday, October 18 at Freshford Village Hall at 7pm.**

Beer, wine and soft drinks will be provided. Please help spread the word and we hope to see you there!

[limpleystokecbs@gmail.com](mailto:limpleystokecbs@gmail.com)



### 94 bus service

Still no decision yet on future funding of the No 94 bus service, which continues to operate as normal for the time being.

However, BANES councillor, Fiona Gourley, has started a petition (600 signatures to date) where bus users can show their support for local services. The petition can be accessed at <https://www.bathnesbuspetition.org.uk/>



### Lower Stoke closure reminder

A reminder that part of Lower Stoke – from its junction with B3108 for approximately 260m in a southerly direction – will close temporarily on **Monday, October 2 between 10am and 3pm** for Network Rail work.

<https://www.one.network/?tm=134392497>

# Extra £10m to improve Wiltshire's roads

Wiltshire Council plans to invest a further £10m over the next two years into maintaining and resurfacing the county's roads.

The £10m – on top of the £14m the council will spend this financial year on highways maintenance – is being funded through the council's capital programme.

The additional money will go on preventative maintenance and a road resurfacing programme, as well as verge repairs on rural roads. Work on potholes will continue, with £2m of existing funds and the Government's recent £3.6m additional grant. Work is likely to begin from April 2024.

## Green light for safety measures



Double yellow lines will shortly be appearing on Winsley Hill in an attempt to make the road safer for pedestrians and other road users. Wiltshire Council carried out its West Wiltshire Parking Review in May, which proposed parking and waiting restrictions for several parishes, including Winsley and Limpley Stoke.

Winsley Hill Traffic Action Group, in support of the proposals, said walking to the canal was a safety issue, with cars parked on the pavement, road, walkway and verge, forcing pedestrians to walk in the road, making it even more hazardous for wheelchair and mobility scooter users, and parents with young children in pushchairs, in terrifying situations such as the one pictured.

Wiltshire Council received 30 letters of support – and one objection – from local residents on the proposed parking and waiting restrictions on Winsley Hill.

The restrictions – from Crockford Farm to the railway bridge – were approved by Wiltshire Cabinet Member for Transport, Councillor Caroline Thomas, and came into force on September 15.

Access the report at <https://cms.wiltshire.gov.uk/ieDecisionDetails.aspx?ID=1913>. See Appendix 2 for Winsley Hill and Limpley Stoke comments.

## Park Lane Big Band's back

Brought to you by the Friends of Freshford and back by popular demand, the **Park Lane Big Band** will make a return visit to Freshford Village Hall on **Friday, November 24** (7.00 for 7.30pm), for what promises to be a wonderful night of music.



Entry is by advance ticket only (£15) available from <https://www.friendsoffreshford.org/get-involved>.

You can also phone John Ager 01225 722374 or email [friendsoffreshford@gmail.com](mailto:friendsoffreshford@gmail.com).

Take your own food, drinks, plates, cutlery and glasses. Bring cash as there'll be a raffle with great local prizes.

## Why did the hedgehog cross the road?

**Monday, October 16, 7.00–8.30pm**  
**Freshford Village Hall**

Hugh Warwick will share his experience of studying, writing about and campaigning for hedgehogs in a funny, illustrated talk about the ecology of the nation's favourite wild animal and how we can help it.

Entrance FREE but donations welcome. Please book on [Eventbrite](https://www.eventbrite.com) if possible, to help organisers gauge numbers. Bar with wine and non-alcoholic refreshments.

Website: <https://www.naturechain.co.uk>



## Home energy advice and help

A declaration by our two parish councils of a climate and ecological emergency spurred a group of volunteers with expertise in the area into forming the Freshford and Limpley Stoke Home Energy Group (FLHEG). The group offers advice to local residents in how to reduce the carbon footprint and energy costs of their homes.

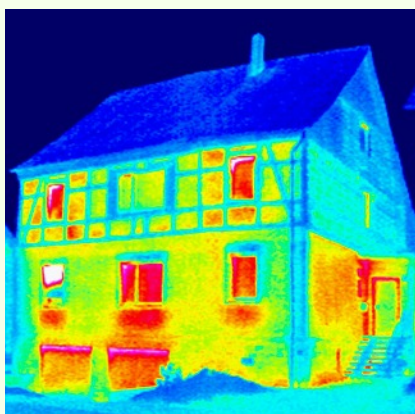
With autumn on its way, thoughts may soon turn to switching on the heating. To try and save you energy, emissions and money, FLHEG will continue with home energy surveys using a thermal-imaging camera. More than 30 surveys have been carried out so far which, in many cases, has led to action to improve energy efficiency and sustainability.

An **Open Homes** day has been pencilled in for the **last weekend in October** where locals can talk to others who have installed energy- and carbon-saving measures. Check the FLHEG pages on the parish websites (*below*) nearer the date.

The term retro-fit – the process of making changes to an existing building to reduce energy consumption and carbon dioxide emissions – is used a lot these days. Two local examples of retro-fitting are the Hop Pole pub and Freshford Memorial Hall.

At the Hop Pole, the plan is for internal wall, roof and floor insulation, secondary glazing, full ventilation system, heat pump and solar PV panels. The Memorial Hall's recent refurbishment included external wall insulation, triple-glazing and heat pump heating system, all of which has reduced the building's energy costs by 35% and CO<sup>2</sup> emissions by 93%.

Further information and a list of consultants and contractors at <https://www.freshford.org.uk>, and <https://www.limpleystoke.com/environment>. Contact FLHEG at [flhegroup@gmail.com](mailto:flhegroup@gmail.com) to arrange a survey of your home.



## LOCAL PLAN reminder

The Wiltshire Local Plan consultation, which runs until **November 22**, will shape future development for the next 15 years. Once adopted, all planning applications will be determined against the Plan, making it Wiltshire's most important place-shaping document.

Have your say at the **Bradford on Avon Library** drop-in event **on Monday, October 2** from 3pm to 7pm, or you can attend any of the other events.

For more information and drop-in event timetable, visit <https://www.wiltshire.gov.uk/article/8029/Overview>

## Avonpark planning application



Avonpark Retirement Village has submitted a planning application to demolish the disused former care home building on its Winsley site and partially re-develop the main complex to enable 71 extra care units and associated communal facilities to be built, plus parking and landscaping.

As the site occupies a prominent position within the Cotswolds AONB and West Wiltshire Green Belt overlooking Limpley Stoke and Freshford, the application is likely to be of interest to the wider community.

The application (reference PL/2023/07518) can be viewed at Wiltshire Council's planning portal at <https://www.development.gov.uk>, where interested parties can also leave comments, or at <https://www.winsley.org.uk>.

Consultation deadline: **WEDNESDAY, OCTOBER 20.**

# What's on

## Film Night

**Limpley Stoke Village Hall**  
7.00 for 7.30pm film start

Film season continues on  
**Wednesday, October 11** with  
*A Fantastic Woman*



Marina is a young transgender woman living in Santiago, Chile. She works as a singer and a waitress and is in a

relationship with an older man named Orlando. They recently moved in together but Orlando wakes in the middle of the night feeling unwell, before tumbling down a flight of stairs.

Licensed bar, friendly atmosphere and fabulous films.

To book membership (£25 for the season) email  
[limpleycreative@gmail.com](mailto:limpleycreative@gmail.com)

## History Society talk

**Wiltshire Gate Lodges by James Holden**

**Wednesday, October 25, Freshford Village Hall, 7.30pm**

Gate lodges at the entrance to large estates were originally very similar in style: austere, single-storey, classical cubes with perhaps only one room doubling-up as accommodation for staff. Most were built in the second half of the 19th century but many surviving lodges have now been sold off and extended to offer up-to-date accommodation.

Members free      Visitors £3.00      Everyone welcome

*Limpley Stoke News is an independent publication produced and edited by Sheena Broadhead. To submit an article, email [sheena.broadhead@tiscali.co.uk](mailto:sheena.broadhead@tiscali.co.uk)*

## Horticultural Society talk

**Wednesday, October 4**  
**Freshford Village Hall**  
7.30pm

**Managing pests and diseases by Nick Morgan**

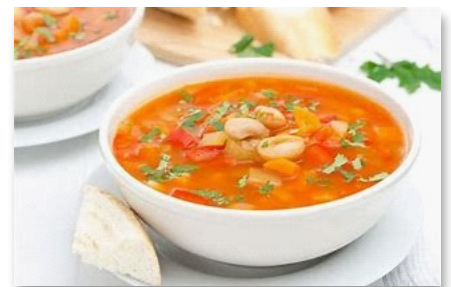


Nick Morgan retired to Gloucestershire in 2016 after 23 years working in key roles within the Royal Horticultural Society. Nick will give his considered advice on how to manage the pests and diseases which cause so many problems in our gardens.

Members free      Visitors £3.00      Everyone welcome

## Pop-up pub

**Friday, October 20**  
**6.30–10pm**  
**Limpley Stoke Village Hall**



With a nod to Hallowe'en, there'll be hearty, main-course soups, followed by fruit pie. Email your choice of veggie or non-veggie soup and whether you'd like a slice of pie to [oramorrish@gmail.com](mailto:oramorrish@gmail.com).

Food, drinks, music, and board games. Cash or card. Most of the profits will go towards the Hop Pole campaign.



## Waste collection days

You can find rubbish and recycling and any chargeable garden waste collection days relevant to your address by visiting Wiltshire Council's website.

<https://ilforms.wiltshire.gov.uk/WasteCollectionDays/index>



## Mobile library monthly visit:

**Thursday, October 26**  
**10.00 – 10.25am**

**Uplands Close, Midford Lane**